

axicon

FOR BARCODE QUALITY

AXICON

IN-LINE BARCODE VERIFIER

Assembly Instructions for the Verifier Stand

*Please do take the time to read these instructions -
Correct assembly is necessary if the verifier is to
perform properly.*



www.axicon.com

CONTENTS

The Kit comprises the following items - please check that you have all of these available before you start the assembly.



1: Baseplate

2: Vertical Supports

4: Screws (to attach vertical supports)

1: Assembled Cradle Unit

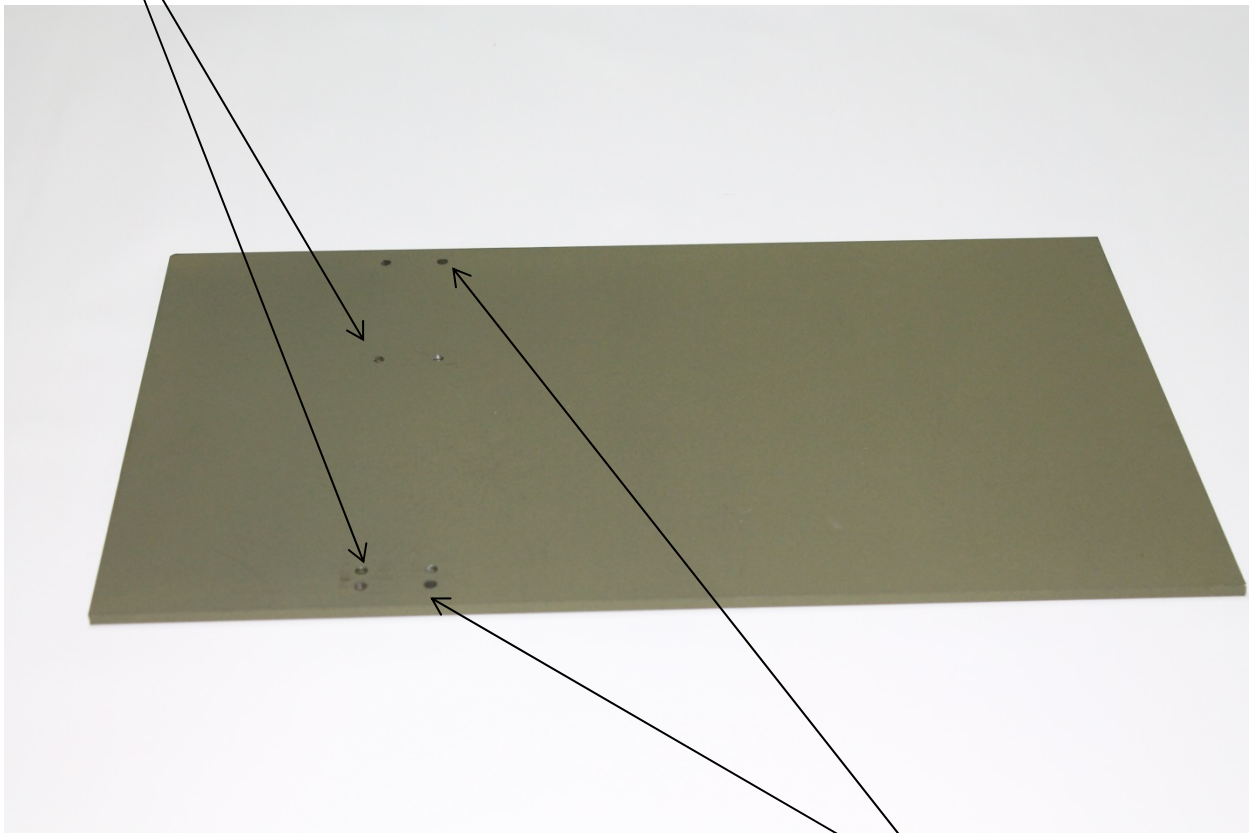
2: Knurled Screws (to attach cradle unit)

1: Verifier (NOT supplied as part of the kit but available separately - essential for actually performing barcode verification!)

1.1 Look at the baseplate (below)

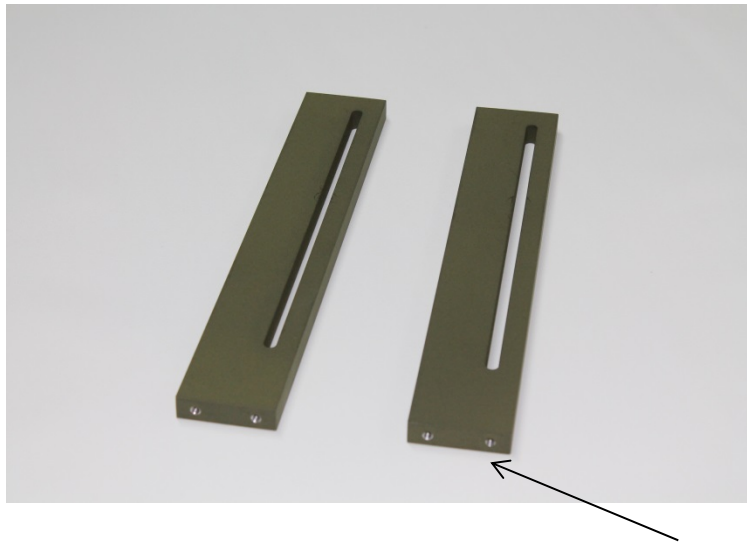
You will see that there are FOUR pairs of holes in the baseplate.

The two INNER pairs of holes are used when the stand will be used in conjunction with the Axicon 6525-S verifier.



The two OUTER pairs of holes are to be used when the stand is to be used for the larger Axicon 7025-S Verifier

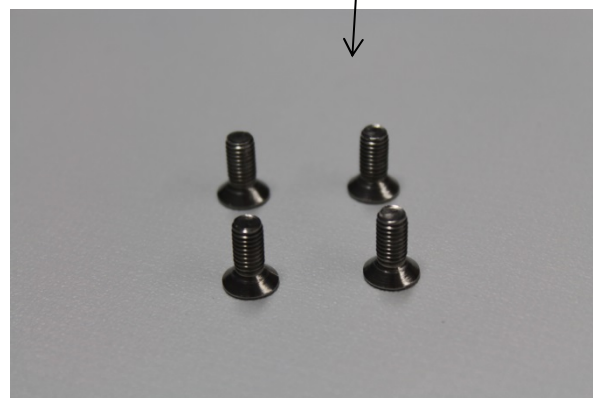
1.2 Take the Two Vertical Supports



Which will be fitted to the baseplate using the four small screws

Note that these are countersunk screws.

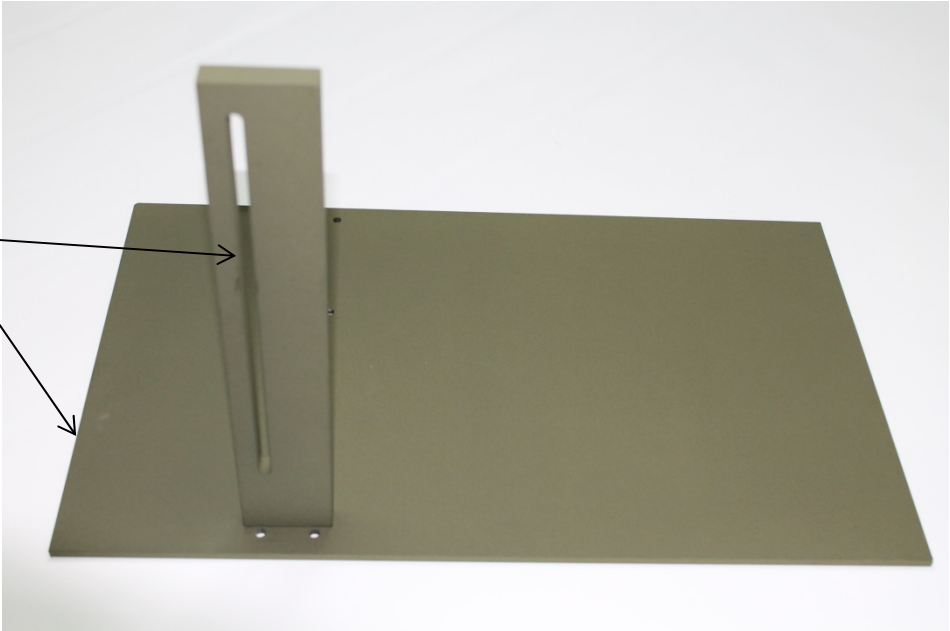
They will be fitted from the underside of the baseplate.



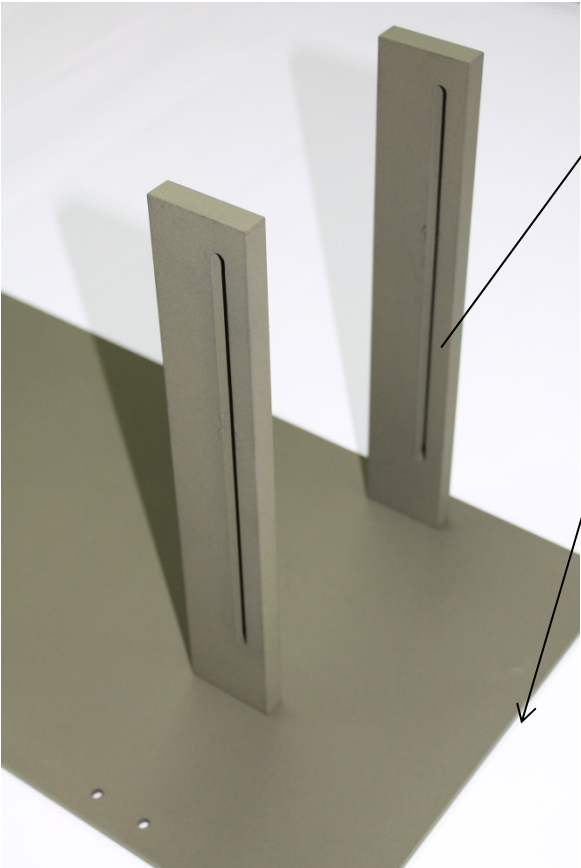
1.3 The vertical supports should be positioned on top of the baseplate and screwed in from the underside.

NOTE:-

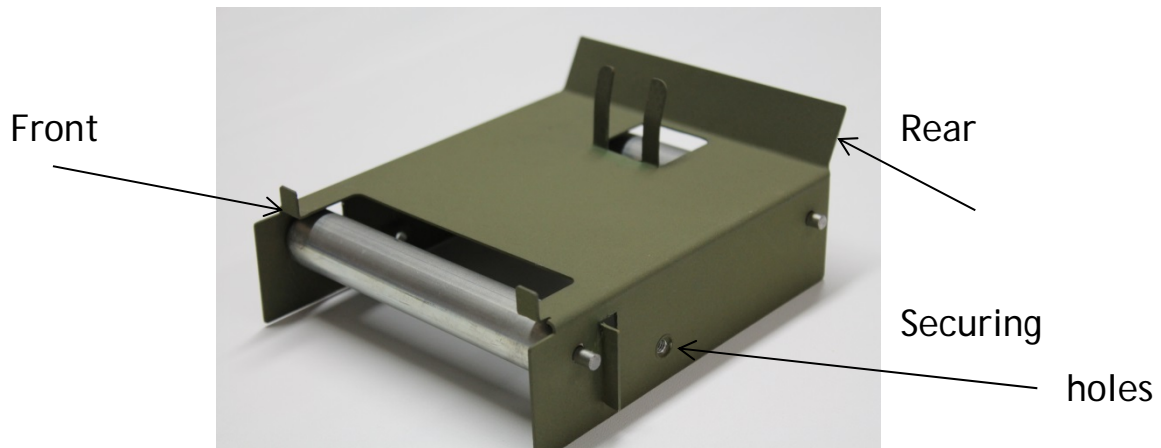
It is important that the slot in the support should be closer to the short end of the baseplate



1.4 Fit the second vertical support - Again the slot in the support must be closer to the short end of the baseplate



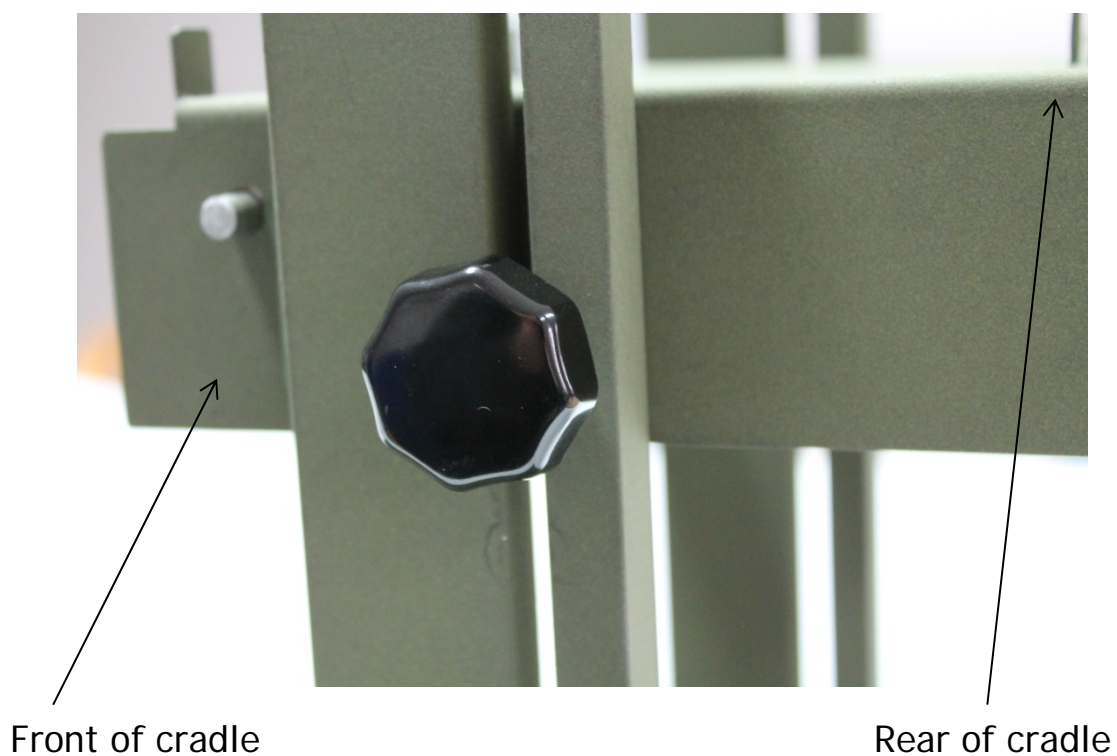
1.5 Take the cradle assembly



1.6 Position the cradle assembly between the vertical supports of the stand.

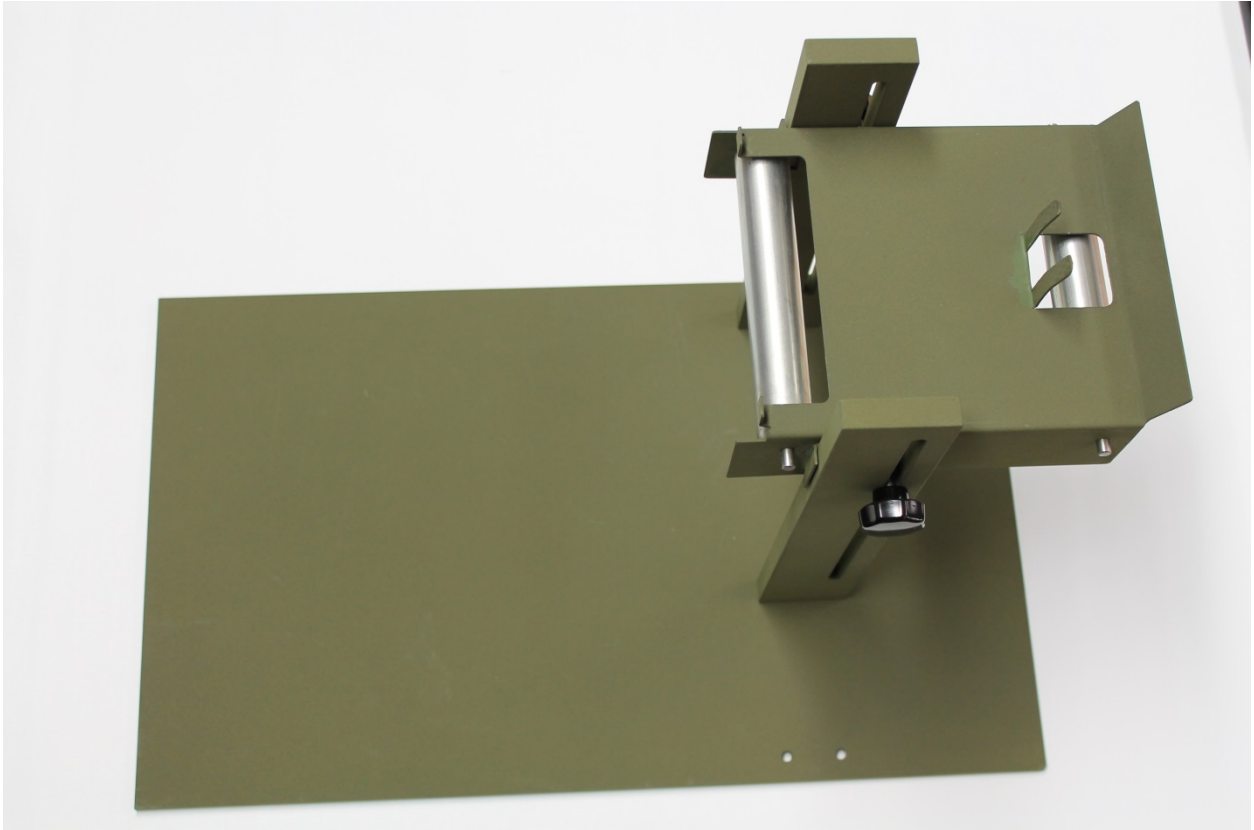
NOTE: The *rear* of the cradle assembly must be positioned towards the shorter end of the baseplate.

1.7 Secure the cradle to the vertical supports using the two knurled screws



1.8

The fully assembled cradle should now look like this:-



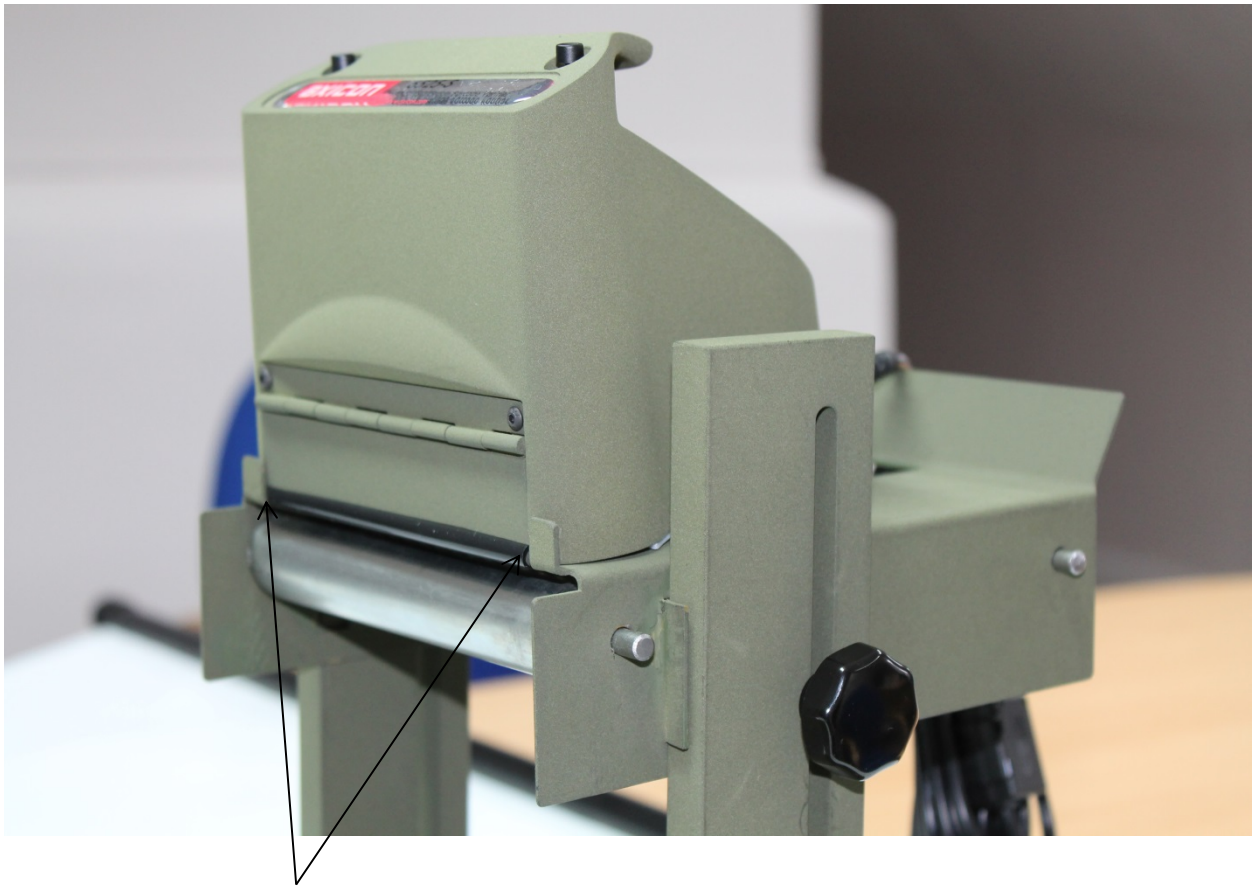
Note the use of the inner pairs of holes in the baseplate when using the smaller cradle (for the 6525-S)

The more visible roller should be at the front of the assembly (The longer part of the baseplate).

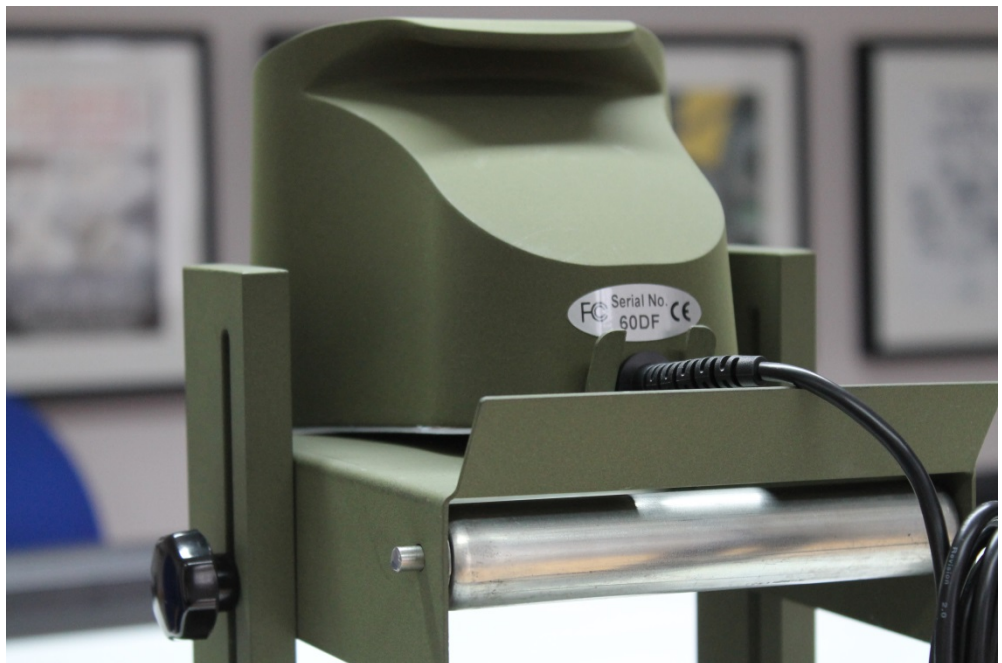
1.9

The verifier is then positioned into the baseplate by inserting it front first and positioning it against the two "stops" on the cradle.

The rear of the verifier is then lowered and it is held in place by the sprung-metal clip at the rear.



Positioning stops



1.10 The longer end of the baseplate should then be positioned UNDER the thermal transfer printer (this will provide greater stability)

1.11 The height of the cradle within the assembly should then be adjusted according to the make/model of printer being used.
(Some printers eject their labels towards the top of the printer whereas others output their labels much lower)

1.12 The ideal position is with the verifier positioned just fractionally below the height at which the labels come out of the printer - so that the labels just brush against the Teflon strip at the front of the verifier before passing under the verifier.

1.13 To alter the height of the cradle assembly simply release the knurled screws, raise or lower the height of the cradle assembly as required and then re-tighten the screws.

OPERATIONAL USE

2.1 When in use the labels should pass from the printer, over both of the rollers in the cradle assembly and then either back to an internal rewinder or off to an external rewinder as required.

2.2 The *easiest* way to feed labels through the verifier assembly is to lift the verifier out of the cradle, pass the labels over the rollers and then put the verifier back into place.

(Please do NOT try removing the rollers from the cradle assembly).

Please note that the rollers are only there to provide a smooth surface against which the label stock can move - they are not required to revolve, that is entirely optional !

AXICON WARRANTY

WARRANTY ON ALL PRODUCTS

- ◆ All Axicon verification equipment is sold with a two year parts and labour warranty against manufacturing defects.
- ◆ This is a Return to Bench warranty with shipping costs in one direction being borne by the customer/distributor.
- ◆ Should you need to return the unit to Axicon the original transit case (plus appropriate packaging) must be used. If the equipment is returned without the original transit case, Axicon will automatically charge an additional sum for the replacement of this case.
- ◆ Axicon's standard repair turn-around is 7-10 working days from receipt of the defective unit.
- ◆ Our standard warranty does not include the provision of a loan unit before the warranty claim is fully assessed.
- ◆ Axicon reserves the right to charge an inspection fee for any equipment returned under warranty for which no fault is found.
- ◆ Please contact Axicon to obtain an RMA number before returning any equipment. This number must be quoted on all documentation. Axicon cannot accept responsibility for equipment returned without a RMA number.

HOW TO CONTACT AXICON

Axicon Auto ID Ltd

Church Road, Weston on the Green, Oxfordshire OX25 3QP, UK

Tel.: +44 (0) 1869 35 11 55

Fax: +44 (0) 1869 35 1 205

Fax VCAS/Repairs: +44 (0) 1869 35 24 04

Email : info@axicon.com

Email VCAS/Repairs: vcas@axicon.com

Technical Support: support@axicon.com

Website: www.axicon.com

For service and support in the Americas please log on to www.axicon.net for contact details

Due to Axicon's continuing product improvement programs, specifications and features herein are subject to change without notice.

All trademarks are acknowledged as belonging to their respective companies.

YOUR AXICON DISTRIBUTOR

